



# MV EXPLOSION VENTS AND STOCKING PROGRAM

*10-day lead time available for common sizes of the MV-RD, MV-RF and MV-CD explosion vents*



**C. Emery Nelson, Inc.**  
INDUSTRIAL AND POWER PLANT EQUIPMENT  
7631 Commerce Street, Hamel, MN 55340  
Ph: 763/420-3844 Fax: 763/420-2542

A Halma company

**EXPLOSION VENT STOCKING PROGRAM**  
10-DAY LEAD TIME  
STANDARD ON ALL INCLUDED VENTS

**2 YEAR WARRANTY**

**HIGH CYCLING**

# MV Explosion Vents

OsecoElfab's MV family of explosion vents are designed with the most common venting applications in mind. The MV family offers the industry's best performance tolerance of +/- 0.25 psig, and consists of the MV-RD, MV-RF, MV-CD and MV-CF vents. Each of these vents meets the requirements of the OSHA Combustible Dust National Emphasis Program and NFPA 68.

A 10-day lead time is available in the USA for common sizes of MV-RD, MV-RF and MV-CD.



Vent	Shape	Vacuum (psig)	Max relief area (inches <sup>2</sup> )	Operating Ratio	Common Applications
MV-RD		-12	1533	80%	BH DC BS
MV-RF		-2	1533	60%	BH BS
MV-CD		-14.7	955	70%	DW BS
MV-CF		n/a	840	50%	DW

## The OsecoElfab difference

- Performance**
    - Highest vacuum ratings
    - Industry-best performance tolerance
    - High cycling
  - Technical Support?**
    - Need help calculating Kst? Contact us on 800-395-3475 for fast engineering support.
- ➔
- Longer service life
  - Peace of mind
  - Less maintenance
  - Available 24/7/365
  - Quality accredited systems
  - Dependable delivery

## MV-RD Rectangular Domed

BH DC BS

- Cycle tested beyond 100,000 cycles
- Single membrane design, no fluoropolymer membrane
- Temperature range: -20°F to 150°F
- ±.25 psig performance tolerance



Meets NFPA regulations



Meets NFPA regulations

## MV-RF Rectangular Flat

BH BS

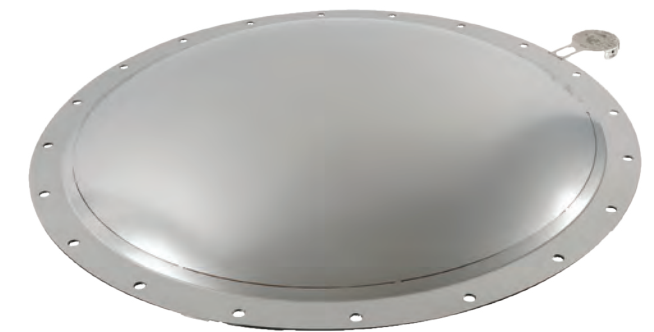
- Available with FDA-approved gaskets for sanitary applications
- Temperature range: -20°F to 450°F
- ±.25 psig performance tolerance



## MV-CD Circular Domed

DW BS

- Excellent for high cycling applications
- Temperature range: -20°F to 450°F
- ±.25 psig performance tolerance



Meets NFPA regulations



Meets NFPA regulations

## MV-CF Circular Flat

DW

- Temperature range: -20°F to 450°F
- ±.25 psig performance tolerance



# EXPLOSION VENT STOCKING PROGRAM

OsecoElfab's MV family of explosion vents are designed with the most common explosion venting applications in mind.

A 10-day lead time is available in the USA for the following sizes of MV-RD, MV-RF and MV-CD.

SIZE (inches)	RELIEF AREA (inches <sup>2</sup> )	BURST PRESSURE (psig @72°F)	VACUUM (psig)
<b>MV-RD</b>			
18 x 35	595	1.5	12
24 x 24	546	1.5	12
24 x 36	825	1.5	12
36 x 36	1251	1.5	12
36 x 44	1533	1.5	12
<b>MV-RF</b>			
12 x 24	264	1.5	2
18 x 35	595	1.5	2
24 x 36	825	1.5	2
36 x 44	1533	1.5	2
<b>MV-CD</b>			
24 Round	415	1.5	14.7
30 Round	650	1.5	14.7
36 Round	955	1.5	14.7

Our innovative product design allows for a 2-year warranty. Contact us to ask for specific warranty details.



**EXPLOSION VENT STOCKING PROGRAM**

**Program Highlights**

### Industry-best Lead Times

1. Minimize downtime
2. Reduce inventory to manage
3. Enable lower budgets

### Standard Market Sizes

1. Ease of selection
2. Less margin of error
3. Less size variability

Let us help you with all your pressure relief questions.



**C. Emery Nelson, Inc.**  
INDUSTRIAL AND POWER PLANT EQUIPMENT  
7631 Commerce Street, Hamel, MN 55340  
Ph: 763/420-3844 Fax: 763/420-2542

US office | Broken Arrow  
+1 (918) 258 5626 | info@osecoelfab.com