

**Positive Displacement
Lobe Blowers/ Vacuum**

**Weight Loaded
Pressure Relief Valves**

THREADED – 1" thru 4"



The SUTORBILT® weight loaded pressure relief valve offers inexpensive relief capacity in a sturdy, trouble free design in 1" through 8" sizes.

Sizes 1" through 4" have standard male threaded connections. Sizes 6" and 8" have standard 125# ANSI flange drillings.

Removable weights have been carefully designed to permit accurate pressure settings in 1/2 PSI increments in the 1" through 4" size and 1/2 and 1 PSI increments in 6" and 8" size.

The operation of the relief valve is simple. As the service line air pressure reaches the pressure setting, the weight loaded cap is forced upwards off the valve seat. As pressure increases, the cap rises to expose the discharge ports. The flow-through capacity of the valve is such that no damage can be caused to the blower or related systems.

The valve automatically reseats itself as line pressure is reduced.

FLANGED 125# ANSI – 6" and 8"



Since the opening and closing of the valve is essentially the sliding of a piston in a cylinder, the valve is virtually chatter-free.

The body and cap of the valve are made of cast iron with close tolerance machined surfaces in the operating areas. The weights are cut from uniform steel plate or uniformly cast to give accurate pressure adjustment.

Application of light oil to the mating surfaces of the cap and body periodically is all the maintenance required on this valve.

The SUTORBILT weight loaded relief valve was engineered to provide long life and dependable protection for your SUTORBILT blower and associated systems by its simplicity of design. Weight loaded pressure relief valves are designed to protect the blower against damage caused by operation at greater than design pressure or vacuum. **However, they are not intended as pressure regulators.**

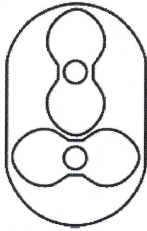
For proper operation, the valve must be mounted in exact upright position.

Use only FULL FLANGE gasket.

Gardner Denver INC.
1800 Gardner Expressway
Quincy, IL 62305

Toll Free 800-682-9868
Phone 217-222-5400
Fax 217-221-8780
www.gardnerdenver.com

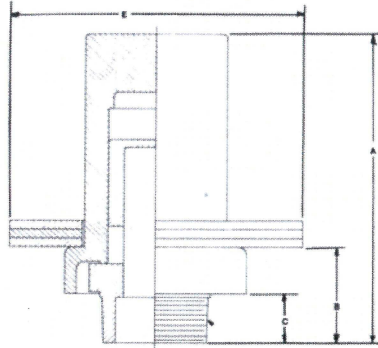
Specifications Subject to change without notice



Positive Displacement
Lobe Blowers/ Vacuum

Weight Loaded
Pressure Relief Valves

THREADED CONNECTION – 1", 2", 3" AND 4"

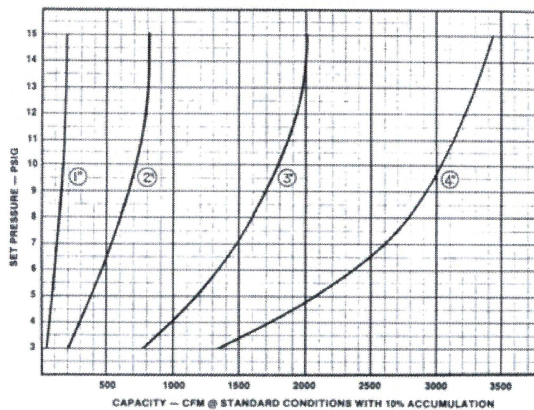


D
N.P.T.

DIMENSION CHART

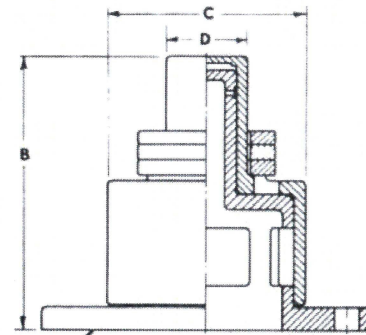
VALVE SIZE	A	B	C	D	E
1 INCH	6-13/16	2-1/16	1-7/16	1" N.P.T.	3-1/2
2 INCH	7-1/8	2-3/8	1-5/16	2" N.P.T.	6-13/16
3 INCH	9-7/8	3-1/16	1-9/16	3" N.P.T.	9-1/4
4 INCH	11-3/8	3-7/16	1-11/16	4" N.P.T.	11-11/16

CAPACITY CHART



NOTE: Valves not recommended to relieve at set pressures under 3 psig.

FLANGED CONNECTION – 6" AND 8"

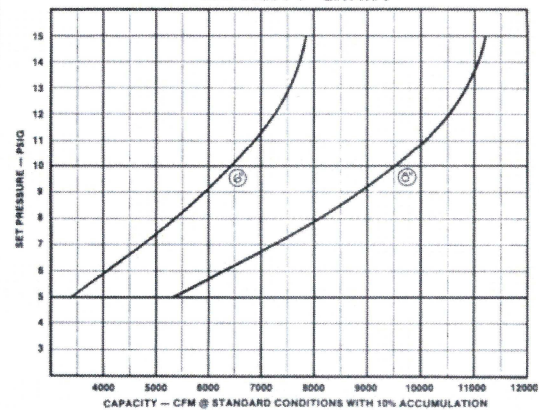


A, MOUNTING FLANGE, ASA 125# DRILLING
USE ONLY FULL FLANGE GASKET.

DIMENSION CHART

VALVE SIZE	DIMENSIONS — INCHES			
	A	B	C	D
6 INCH	6	9-5/8	6-1/2	2-5/8
8 INCH	8	11-1/4	9-1/4	2-3/4

CAPACITY CHART



NOTE: Valves not recommended to relieve at set pressures under 5 psig.

Gardner Denver INC.
1800 Gardner Expressway
Quincy, IL 62305

Toll Free 800-682-9868
Phone 217-222-5400
Fax 217-221-8780
www.gardnerdenver.com

Specifications Subject to change without notice