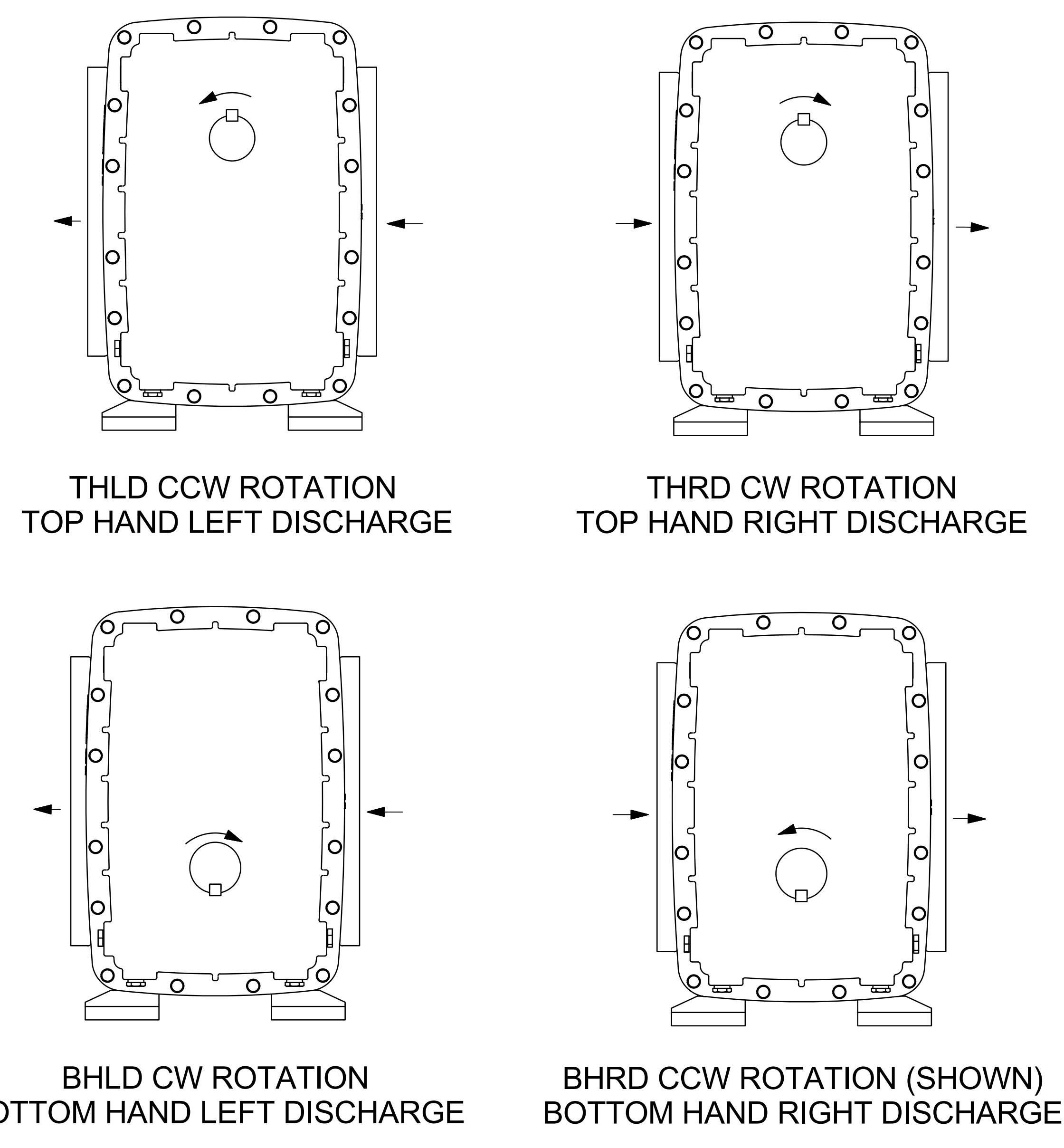
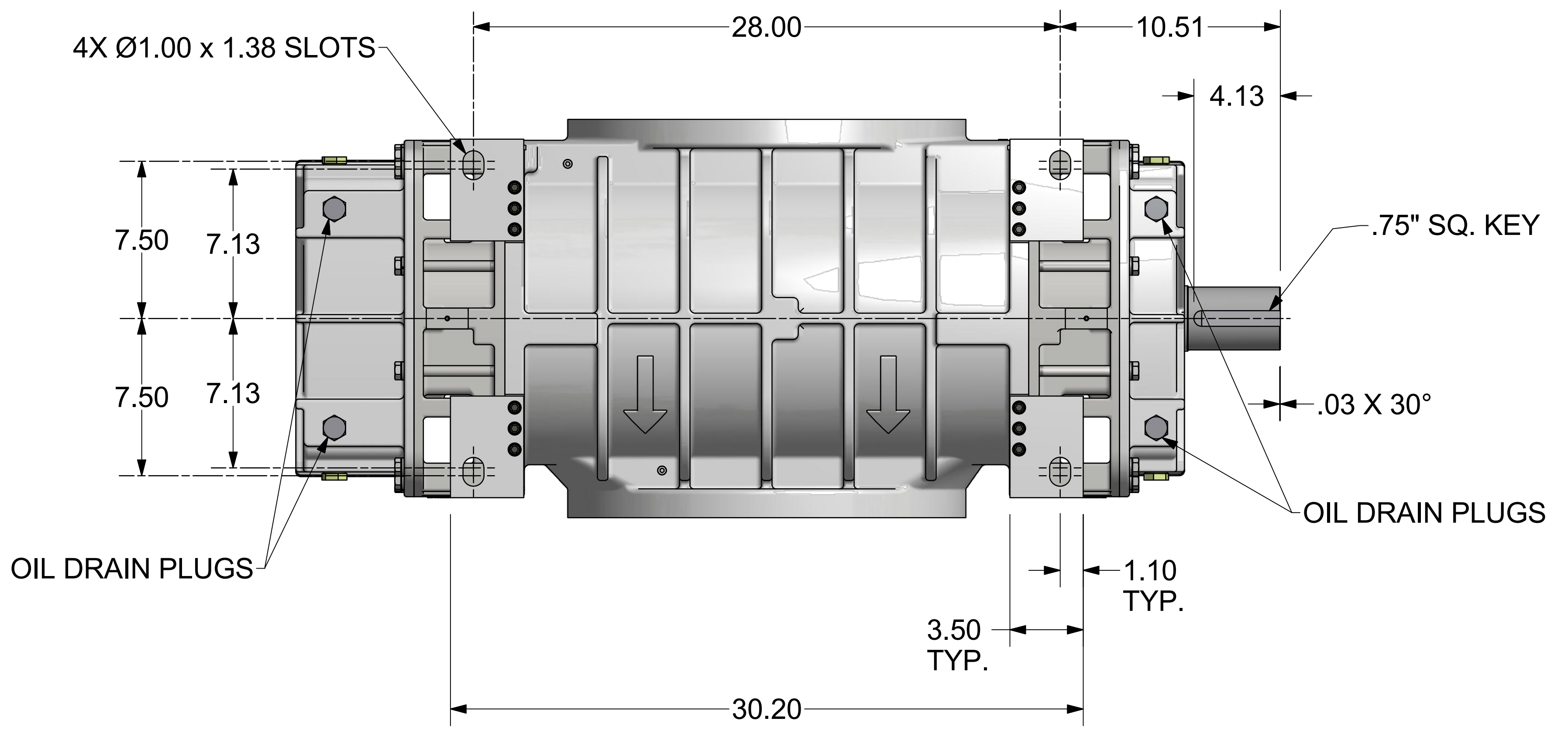
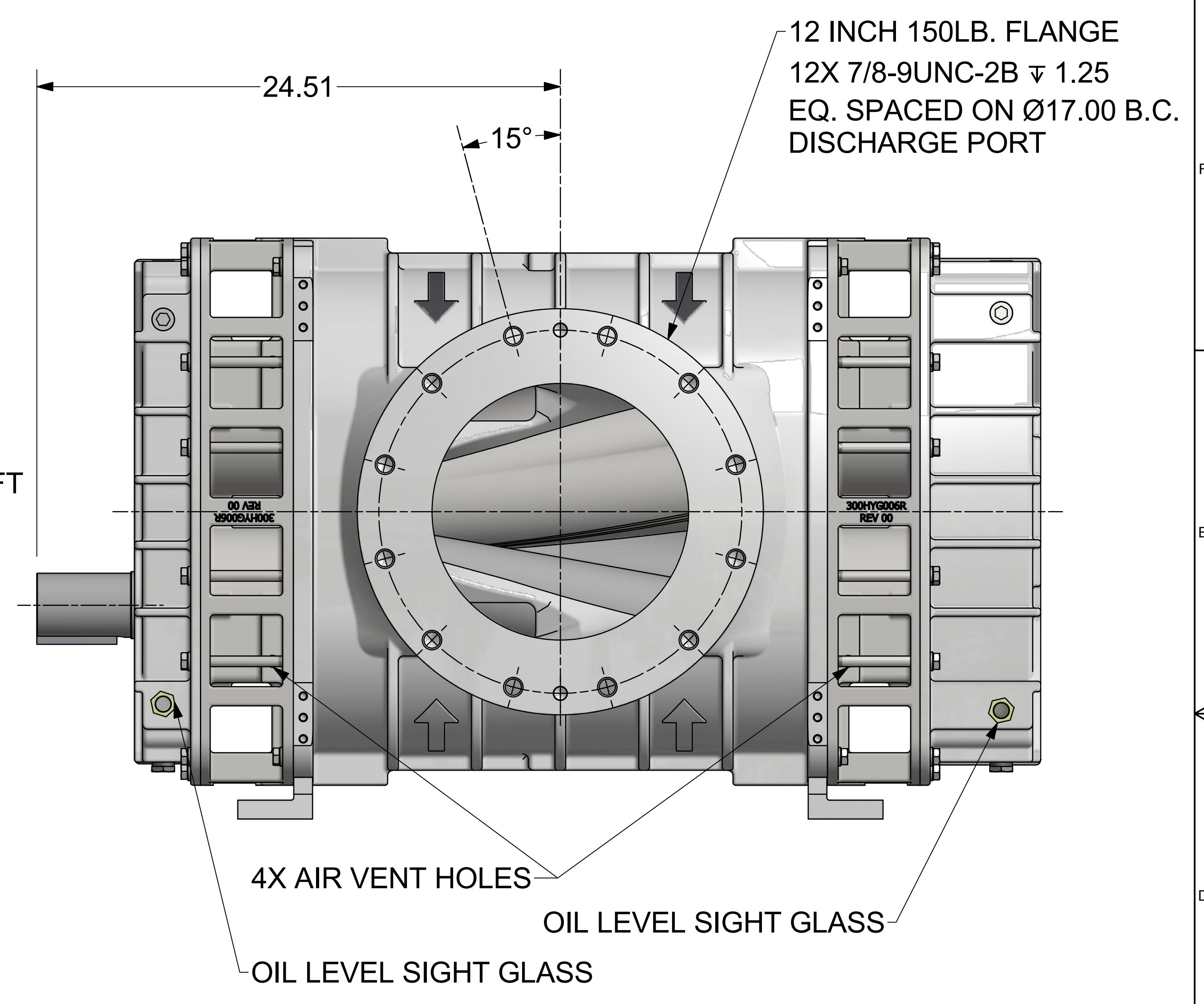
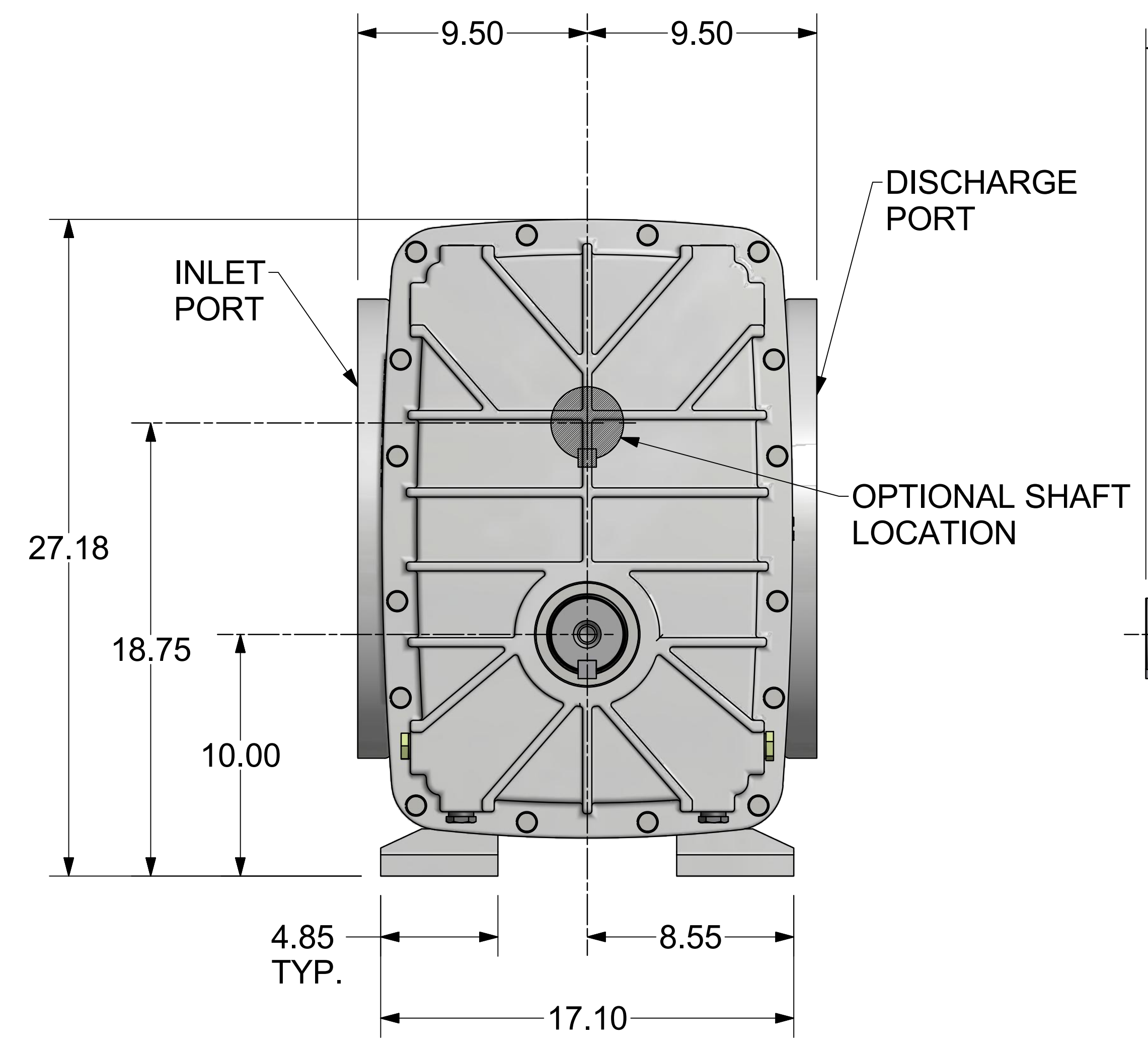
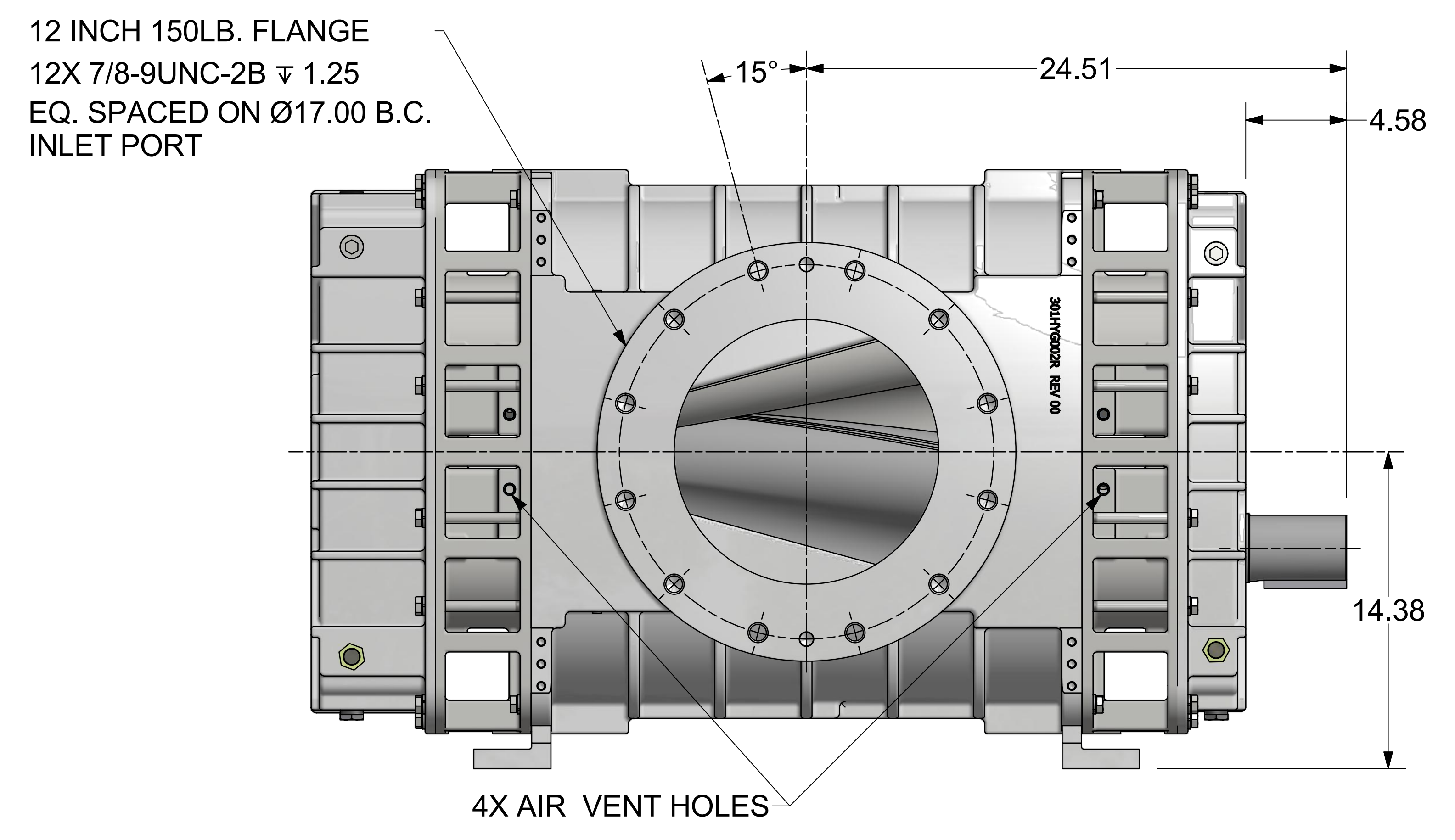
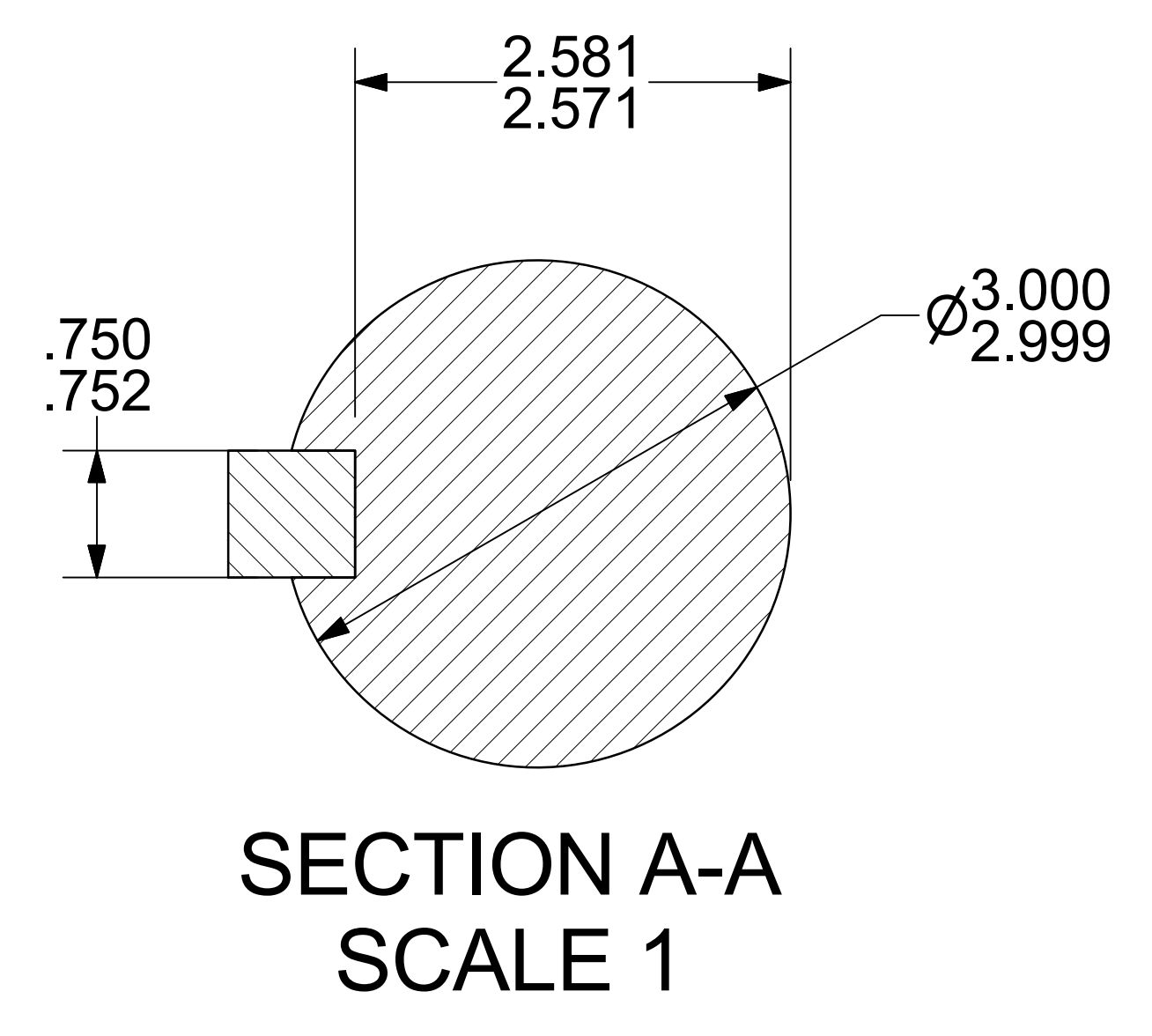
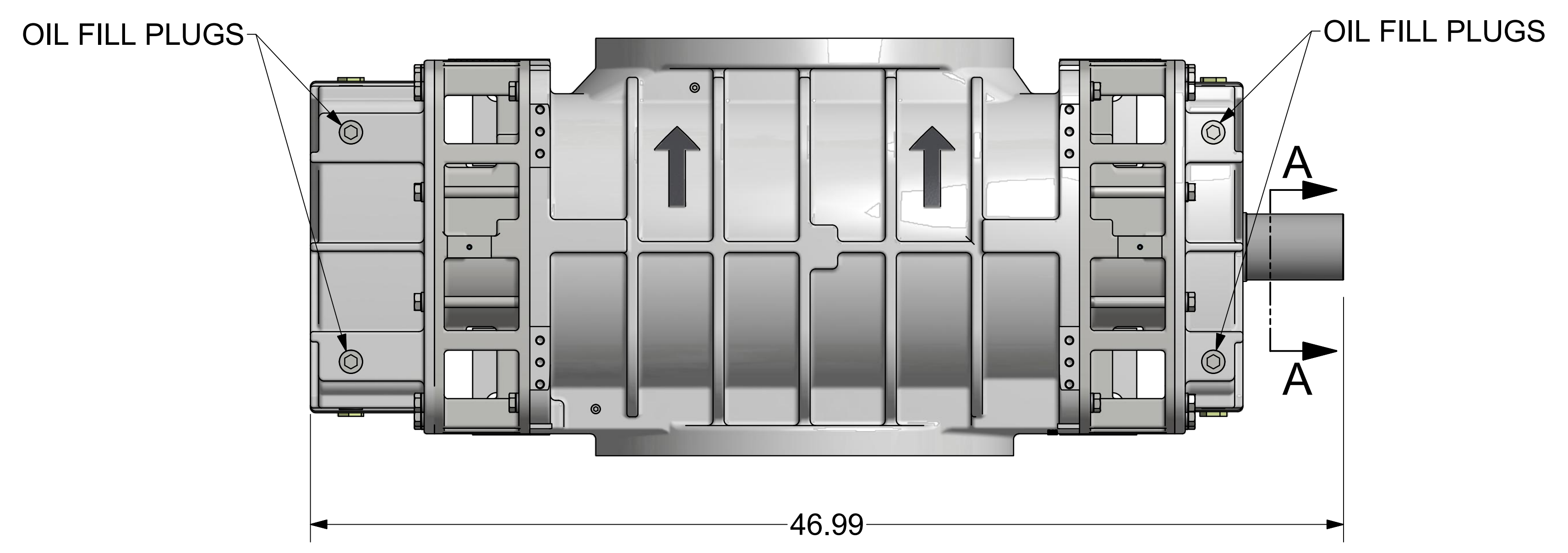


REVISION HISTORY						
ZONE	REV	DESCRIPTION	ECN #	DATE	DWN	CHK
	02	REMOVED LIFTING LUGS	1114643	30-Jan-18	rn8465	

C. Emery Nelson, Inc.
INDUSTRIAL AND POWER PLANT EQUIPMENT
7631 Commerce Street, Hamel, MN 55340
Ph: 763/420-3844 Fax: 763/420-2542



FINISH OF CHAMFERS AND FILLETS TO CONFORM TO ROUGHEST ADJACENT AREA.		CONFIDENTIAL - THE INFORMATION CONTAINED IN THIS DOCUMENT IS THE PROPERTY OF GARDNER DENVER, INC. IT IS NOT FOR PUBLIC DISCLOSURE. POSSESSION OF THE INFORMATION DOES NOT CONVEY ANY RIGHT TO LOAN, SELL, OR DISCLOSE THE INFORMATION. UNAUTHORIZED REPRODUCTION OR USE OF THE INFORMATION IS PROHIBITED. THIS DOCUMENT IS TO BE RETURNED TO GARDNER DENVER, INC. UPON THE COMPLETION OF THE PURPOSE FOR WHICH IT IS LOANED OR UPON REQUEST.	
SURFACE ROUGHNESS MAXIMUM PER ASME B46.1. FULL THREAD DEPTHS ARE MINIMUM.		DIMENSIONING AND TOLERANCING PER ASME Y14.5-2009. THREADS PER ASME B1.1 GAGING SYSTEM 21 U.O.S., ANSI B1.20.1 & B1.20.3	
UNLESS OTHERWISE SPECIFIED DIMENSIONS ARE IN INCHES		Gardner Denver Inc. Quincy, IL.	
TOL. ON DECIMALS: X = \pm .05	TOL. ON DECIMALS: XX = \pm .02	DESCRIPTION: 4093-GRP-BLOWER	HEAT TREATMENT: []
TOL. ON DECIMALS: XXX = \pm AS SPECIFIED	TOL. ON ANGLES: = \pm 0'-30'	DRIVEN BY: pmc2275	DATE: 28-Aug-17
THIRD ANGLE PROJECTION		SCALE: 1/4	REV: 02
DRAWN BY: rn8465		DATE: 14-Sep-17	302HYG800
SHEET: 1 OF 1		1	