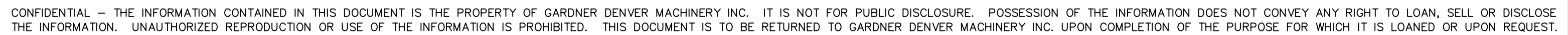


**C. Emery Nelson, Inc.**  
 INDUSTRIAL AND POWER PLANT EQUIPMENT  
 7631 Commerce Street, Hamel, MN 55340  
 Ph: 763/ 420-3844 Fax: 763/420-2542



SURFACE ROUGHNESS MAX. PER ASA SPEC.

LET.		REVISION	DATE	DR.	CK.	LET.		REVISION	DATE	DR.	CK.	Gardner Denver	FOR ALL CURRENT SPECIFICATIONS REFER TO BILL OF MATERIAL
A	RELEASED (C/M 1028500)											Gardner Denver Inc. Peachtree City, Georgia	NAME OUTLINE—BARE UNIT 7012 DUROFLOW VERTICAL
.												TOLERANCES: UNLESS OTHERWISE SPECIFIED	DR. SLM 11/22/05 MET. APP.
												DECIMAL .XX ± .02 .XXX ± .010	CK. SM 11/22/05 ENG. APP.
												NON-DECIMAL ± 1/16 ANGLES ± 1°	SCALE 3/16 —
												SHEET 1 OF 1	HEAT TREAT SPEC. — FILE NO. C CAD/CAM