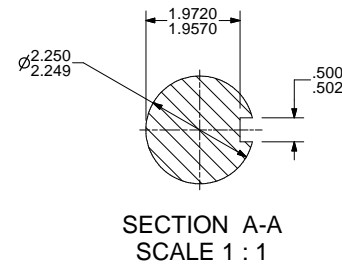
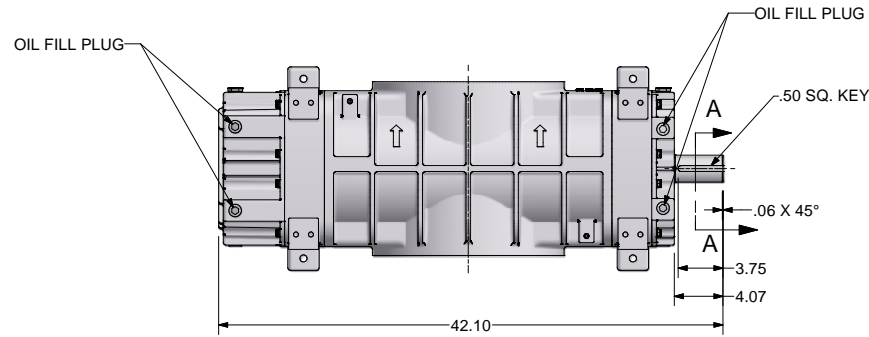
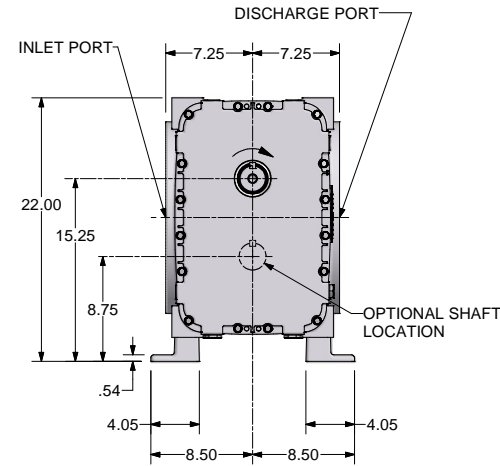
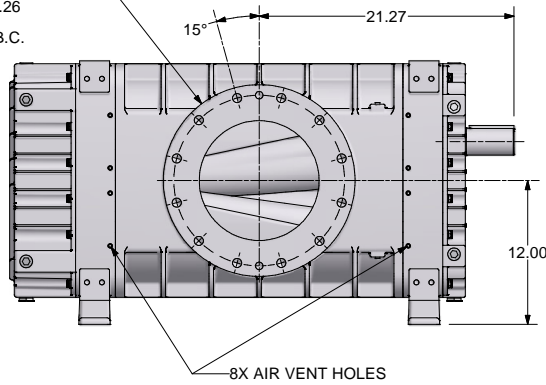


REVISION HISTORY		DATE	DWN	CHK
ZONE	REV	DESCRIPTION		
	A	RELEASED PER ECN 1037999		

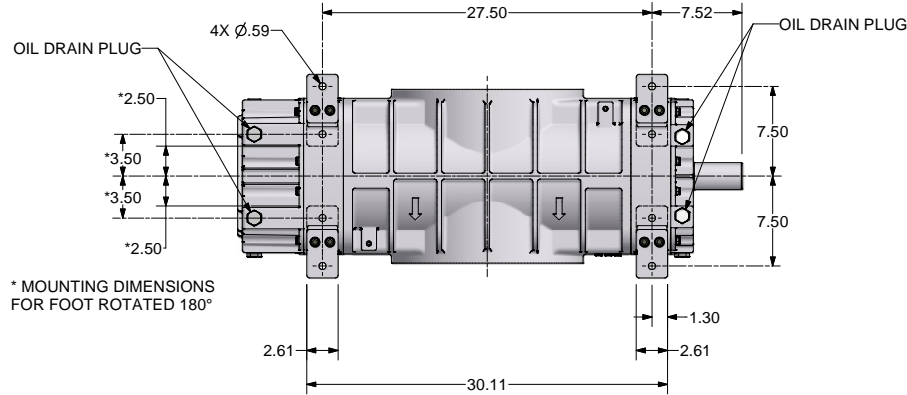
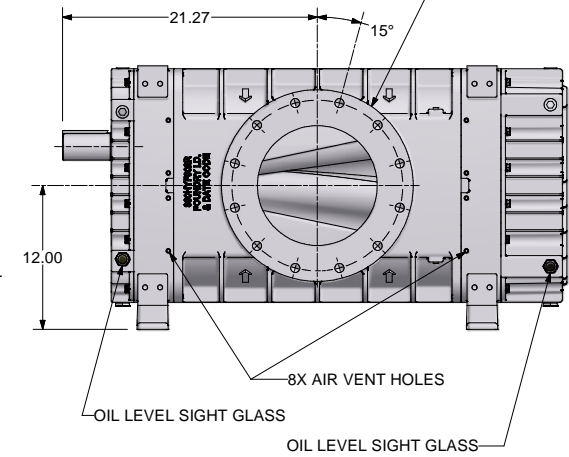
GDHF-DIM-624V
DATE-10/01/07



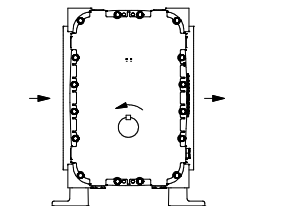
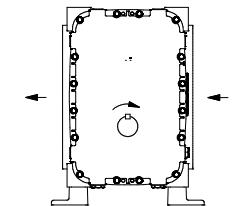
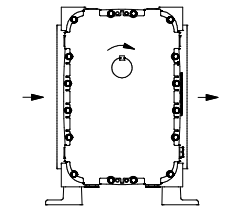
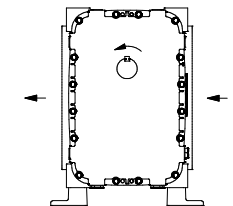
10" 150# FLANGE
12X 7/8-9 UNC-3B ∇ 1.26
EQ. SPACED \varnothing 14.25 B.C.
INLET



10" 150# FLANGE
12X 7/8-9 UNC-3B ∇ 1.26
EQ. SPACED \varnothing 14.25 B.C.
OUTLET



* MOUNTING DIMENSIONS
FOR FOOT ROTATED 180°



C. Emery Nelson, Inc.
INDUSTRIAL AND POWER PLANT EQUIPMENT

7631 Commerce Street, Hamel, MN 55340
Ph: 763/ 420-3844 Fax: 763/420-2542

UNLESS OTHERWISE SPECIFIED DIMENSIONS ARE IN INCHES TOL. ON DECIMALS: .X = ± .05 TOL. ON DECIMALS: .XX = ± .02 TOL. ON DECIMALS: .XXX = ± .01 TOL. ON ANGLES: ± 0°-30'		CONFIDENTIAL: THE INFORMATION CONTAINED IN THIS DOCUMENT IS THE PROPERTY OF GARDNER DENVER, INC. IT IS NOT TO BE REPRODUCED OR DISCLOSED TO ANY OTHER PARTY WITHOUT THE WRITTEN PERMISSION OF GARDNER DENVER, INC. UNAUTHORIZED REPRODUCTION OR USE OF THE INFORMATION IS PROHIBITED. THIS DOCUMENT IS TO BE RETURNED TO GARDNER DENVER, INC. UPON THE COMPLETION OF THE PURPOSE FOR WHICH IT IS LOANED OR UPON REQUEST.	
THIRD ANGLE PROJECTION		Gardner Denver Inc. Quincy, IL	
DWN BY: RRB 10/8/2007		TITL: HELIFLOW 624 VERTICAL	
CRD BY: RNS 10/8/2007		304HYF800	