



# BrazePak™ Brazed Plate Heat Exchangers

EFFICIENT HEAT TRANSFER. COMPACT DESIGN.

Standard **X**change  
a xylem brand

# BRAZEPAK™

## HIGH PERFORMANCE

### BRAZED PLATE HEAT EXCHANGERS

#### THERMAL PERFORMANCE

Standard Xchange unique heat transfer plate designs provide high rates of heat transfer requiring less surface area than conventional shell and tube heat exchangers.



Compare BrazePak™ with conventional shell and tube units:

- One-sixth the size
- One-fifth the weight
- Uses only one-eighth the liquid
- Requires one-third to one-fifth the surface area

Standard **X**change



# DESIGN PERFORMANCE

## MECHANICAL DESIGN:

Standard design pressures up to 435 psig at maximum design temperature of 450°F. Custom designs to pressures of 1000 psig. Minimum design temperature to -310°F.

## CONSTRUCTION CODES:

Available codes include; UL, CRN, ASME Sec.VIII Div.1 "U" stamp, ASME Sec.III "N" stamp, Pressure Equipment Directive (97/23EC), China ML, Korean KGS, Brazilian NR-13.

## MATERIALS:

Stainless Steel 316L plates. Copper or Nickel braze material.

## PERFORMANCE:

Single Wall and Double Wall Options



## CONNECTIONS:

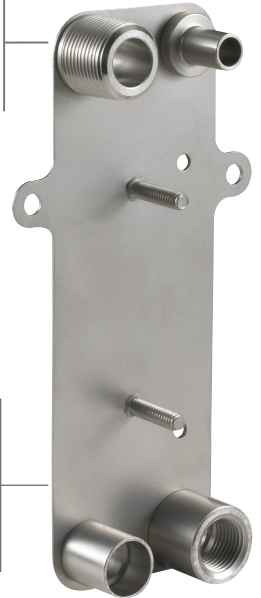
From 1/4 inch to 4 inch. Standard connection options include NPT, SAE, Flanged and Sweat. Custom connections available.

## CAPACITY:

Up to 800 GPM and 1100 Sq.ft. of surface area.

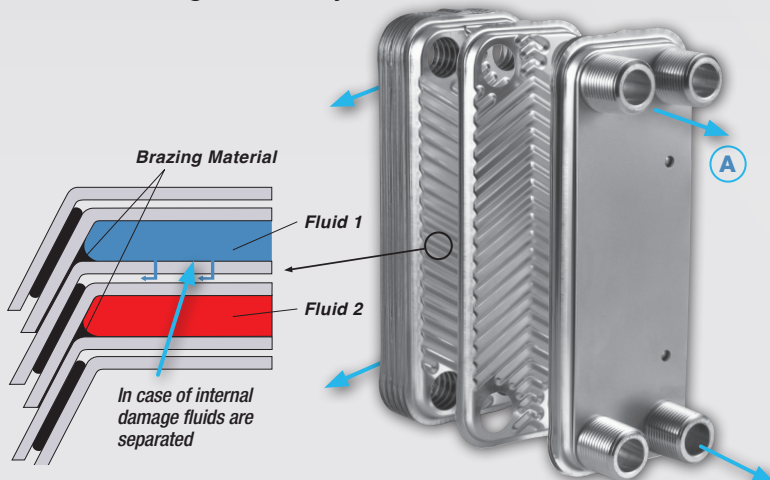
## MOUNTING:

Reduce mounting costs with optional threaded studs or integral mounting bracket. Custom mounting options available.



## BRAZEPAK™ BPDW DOUBLE-WALL

BrazePak™ BPDW Double-Wall brazed plate heat exchangers offer the highest level of leak protection, safety, thermal efficiency and durability in a compact, low cost unit. Standard Xchange advanced lean manufacturing process provides fast deliveries with maximum design flexibility.

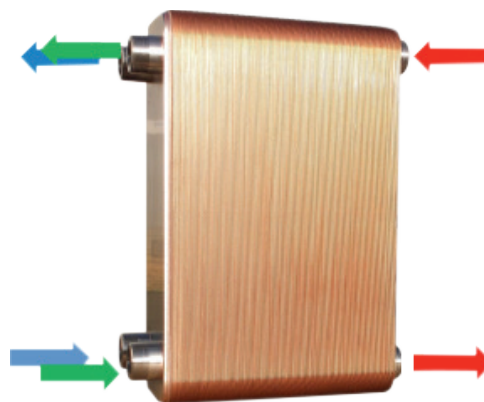
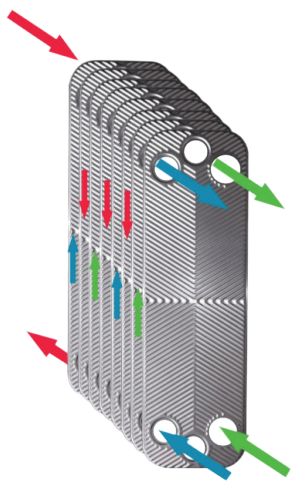


## BRAZEPAK™ BPDW DOUBLE-WALL PROVIDES:

- True double-wall construction, including port regions
- Double-wall plate design with unique air vent leak paths
- Complete peripheral braze for additional strength
- Four dedicated leak ports for quick and easy leak detection <sup>A</sup>
- Excellent performance for domestic water applications
- Dependable protection of fresh water streams for cooling of oils and refrigerants

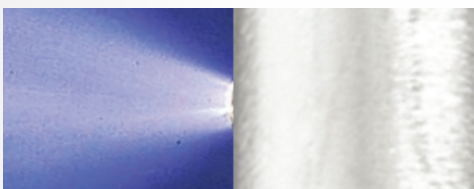
## BRAZEPAK™ BPDC DUAL CIRCUIT

BrazePak™ BPDC Dual Circuit braze plate exchangers offer true two independent refrigerant circuit performance. The special designed plate configuration allows for two separate refrigerant circuits to operate with one common process circuit. The specially designed plate configuration allows for each refrigerant circuit to be in contact with all process flow channels even at a partial load condition (i.e. one compressor running).



### BRAZEPAK™ BPDC DUAL CIRCUIT PROVIDES:

- True dual circuit construction for operation with two independent refrigerant circuits.
- Facilitates operation at partial load with only one compressor running maximizing performance.
- Specially designed plate configuration for uniform distribution of fluid across heat transfer plates minimizes maldistribution and allows for more convenient same side flow arrangement for refrigerant.

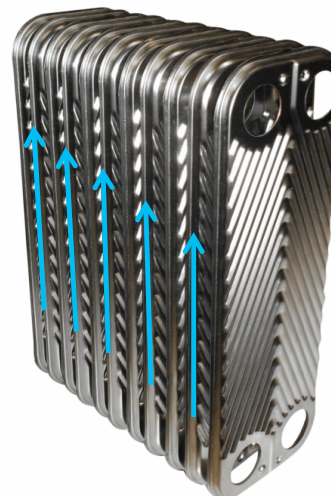


## BRAZEPAK™ REFRIGERANT DISTRIBUTOR

BrazePak™ BPRD refrigerant distributor ensures all refrigerant evaporator channels receive equal amount of flow to maximize performance, efficiency, and superheat and to protect against thermal expansion valve instability.

### BRAZEPAK™ REFRIGERANT DISTRIBUTOR PROVIDES:

- Equal flow of refrigerant to each refrigerant flow channel.
- Permits stable operation of evaporator, thermal expansion valve, and compressor.
- Reduces chance of freeze-up caused by overfeed of refrigerant to specific channels.



## HIGH PERFORMANCE

BrazePak™ brazed plate heat exchangers offer the highest level of thermal efficiency and durability in a compact, low-cost unit.

## COMPACT DESIGN

The corrugated plate design provides very high heat transfer coefficients, resulting in a smaller surface area. This makes the BrazePak™ an excellent choice; especially where space is a consideration.

## SOLID SELF-CONTAINED UNIT

Thin corrugated stainless steel plates are vacuum brazed together to form a very durable, integral piece that can withstand both high pressure and high temperature.

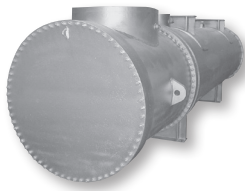
## NUMEROUS APPLICATIONS

BrazePak™ units are ideal as refrigerant condensers and evaporators, as oil coolers for engines and machinery, and in many other industrial applications.





# MODELS OF **EFFICIENCY.**



## **CENTURY SERIES®**

Engineered/  
customized heat  
exchangers for  
process and other  
heating/cooling  
applications.



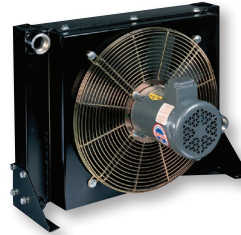
## **BRAZEPAK™**

Brazed plate  
heat exchanger.



## **PLATEFLOW®**

Gasketed plate  
& frame heat  
exchanger.



## **AIREX® AND FANEX®**

Air/oil, air/air,  
or air/water  
heat exchangers.



## **PRE-ENGINEERED SERIES**

BCF®/SSCF®/  
SX2000®/B300®  
Pre-engineered  
shell and tube  
heat exchanger.

---

**Standard Xchange**  
a xylem brand

---

Standard Xchange  
175 Standard Parkway • Cheektowaga, NY 14227  
Tel +1.800.281.4111 • Fax +1.716.897.1777  
[www.standard-xchange.com](http://www.standard-xchange.com)

---

Formerly ITT Standard™

104-82 • 05/2014

**FOR MORE INFORMATION, PLEASE CONTACT:**



**C. Emery Nelson, Inc.**

INDUSTRIAL AND POWER PLANT EQUIPMENT

7631 Commerce Street, Hamel, MN 55340  
Ph: 763/ 420-3844 Fax: 763/420-2542